

DELTA[®]-MS UNDERSLAB

Under slab vapor barrier Installation Instructions

Health and Safety

- Required safety equipment: hard hat, safety boots, gloves, safety glasses.
- Always follow all safety precautions as directed by the Occupational Safety and Health Administration (OSHA-USA) or the Construction Safety Association (Canada).
- Please refer to Safety Data Sheets for all components and observe all recommended safety precautions therein.
- The general codes of practice for protection at work and instructions of the manufacturers for tools and components are to be observed at all times.

Recommended Materials

- DELTA[®]-MS UNDERSLAB
- DELTA[®]-THENE PRIMER or DELTA[®]-HF PRIMER
- DELTA[®]-FLEXX-BAND
- DELTA[®]-MULTI BAND

Recommended Tools

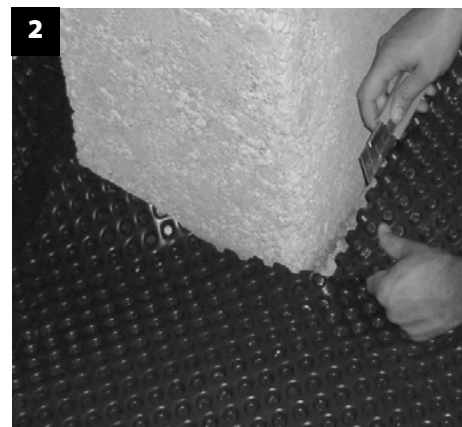
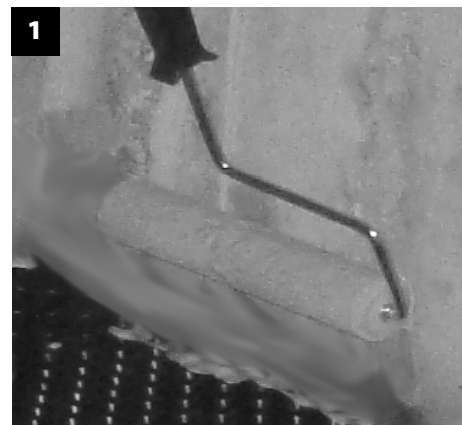
- Hand roller
- Short nap paint roller and handle
- Utility knife
- Broom

Notes and Limitations

- These installation instructions for DELTA[®]-MS UNDERSLAB are intended only as a guide and are for the convenience of the contractors, specifiers, and other interested parties. The final application and details are the sole responsibility of the design authority on record for the project.
- Always confirm the local building code requirements prior to installation.
- DELTA[®]-MS UNDERSLAB may be installed over gravel, compacted soil, undisturbed soil, and on (inplace off) of working (mud) concrete slabs.
- To help preventing cracking of slab, water cement ratio of the concrete to be poured on top of DELTA[®]-MS UNDERSLAB shall be kept at .45 - .50.
- Ensure objects that may penetrate the membrane are removed from substrate.
- Remove any debris from the area to be covered by DELTA[®]-MS UNDERSLAB.
- Prior to installation of DELTA[®]-MS UNDERSLAB, clean top of footer of any gravel and debris with a broom.
- Foot traffic and wheelbarrow traffic will not damage DELTA[®]-MS UNDERSLAB.
- Hand roll DELTA[®]-FLEXX BAND with hand roller to ensure proper adhesion.
- DELTA[®]-MS UNDERSLAB is not designed for permanent UV exposure. Always cover as soon as possible.

Installation

- Priming substrate:
 - DELTA[®]-FLEXX-BAND will be installed on the primed surfaces after the installation of DELTA[®]-MS UNDERSLAB.
 - Apply primer at the base of the wall minimum 10 cm (4") with short nap roller at recommended application rate. Apply only to substrate, not to DELTA[®]-FLEXX-BAND (see Detail 1).
 - Allow primer to dry a minimum of 30 minutes or until tack-free prior to applying DELTA[®]-FLEXX-BAND. Actual drying time may be longer in cold temperatures or humid conditions.



■ Installing DELTA®-MS UNDERSLAB:

- Beginning at the longest straight wall, roll out the DELTA®-MS UNDERSLAB, dimple side down and cup side up.
- DELTA®-MS UNDERSLAB should be installed as tightly as possible to all walls (see Detail 2).
- At service penetrations, cut DELTA®-MS UNDERSLAB as tightly as possible around penetrations.
- Tape around the penetration using DELTA®-FLEXX-BAND or DELTA®-MULTI BAND (see Detail 3).
- Overlap the “flat tab” of DELTA®-MS UNDERSLAB located at one side of the roll with the edge of the previous roll (see Detail 4).
- Tape all seams with DELTA®-FLEXX-BAND or DELTA®-MULTI BAND (see Detail 5).
- Seal DELTA®-MS UNDERSLAB to previously primed perimeter wall with DELTA®-FLEXX-BAND (see Detail 6).

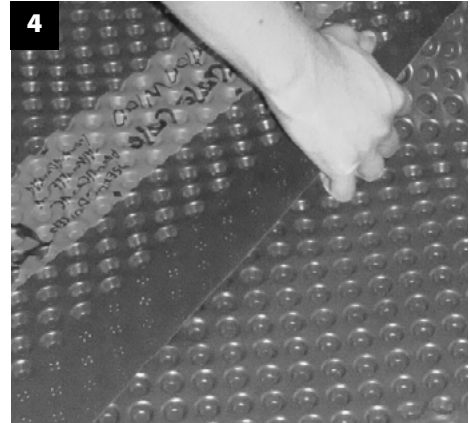
Inspection and Clean-Up

- Inspect DELTA®-MS UNDERSLAB for rips, tears, or other installation deficiencies
- Patch any rips, tears, or holes with a piece of DELTA®-FLEXX-BAND or DELTA®-MULTI BAND 5 cm (2”) larger than the hole.
- For larger tears or holes, cut a patch of DELTA®-MS UNDERSLAB. Seal with DELTA®-FLEXX-BAND or DELTA®-MULTI BAND.
- Walk around application and ensure all materials are installed as required.
- Clean up all excess materials.

Disposal of Waste

- DELTA®-MS UNDERSLAB is made out of environmentally friendly HDPE.
- Waste can be recycled where facilities allow.

For technical support, call our Technical Support Team at 1-888-433-5824 extension 326, or visit www.dorken.com.



DÖRKEN
Dörken Systems Inc.
4655 Delta Way
Beamsville, Ontario
L3J 0T6
1-(905) 563-3255
Fax: (905) 563-5582
info@dorken.com
www.dorken.com
A company of the **DÖRKEN**GROUP

The information printed in this brochure reflects product information and specifications at the date of printing. The manufacturer reserves the right to make changes when necessary. All rights reserved.



DELTA®-branded quality products
manufactured by Dörken.