

### TECHNICAL DATA SHEET

## DELTA®-FASSADE SA

**Self-Adhered Water-resistive Barrier & Air Barrier for Façade Systems with Open Joint Claddings.**

### MATERIAL

DELTA®-FASSADE SA is a 3-layer self-adhered water-resistive barrier (WRB) and air barrier with highly UV-stabilized acrylic coating. Its two outer layers are made of a high strength spun-bonded polypropylene (PP) fabric. They are thermally bonded to a highly vapor permeable, watertight polymeric middle layer. DELTA®-FASSADE SA maintains high vapor permeability and has a full surface coating of a high tack adhesive for bonding to common substrates. It has a split release liner for ease of application.

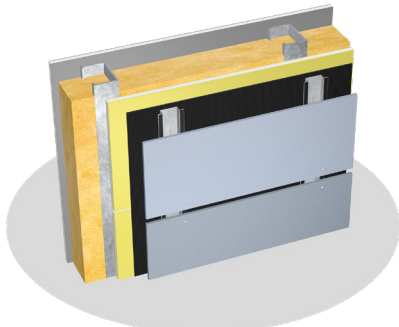
### PROPERTIES

DELTA®-FASSADE SA, highly stabilized against damage from UV exposure, is designed for use in cladding systems that have open joints of up to 2" (50 mm) wide which expose up to 40 % of the entire facade surface. It acts as a durable drainage plane, channeling bulk (liquid) water from wind-driven rain and snow to the outside of the structure. The watertight membrane helps protect the building enclosure from damaging effects of moisture infiltration. Its high vapor permeability allows moisture within the cavity to escape swiftly. It is an air barrier that meets the industry's most stringent standards. DELTA®-FASSADE SA is light-weight and tear-resistant. This membrane withstands the rigors of jobsites, as well as tough wind and weather.

### APPLICATION

DELTA®-FASSADE SA is installed outboard of the sheathing prior to the application of the final cladding system. Use DELTA®-LFS 100% silicone for liquid flashing and sealant applications. Do not use sealants, flashings, products or chemicals that contain surfactants on DELTA® water-resistive and air barrier membranes because they can adversely affect the water hold-out properties of any PP spunbond-based water-resistive barrier. Such products may include asphaltic materials, various chemicals, acid-based silicones, cleaning compounds, and certain formulations of liquid flashings, e.g. specific STP-based materials. Always confirm compatibility with the manufacturer's published technical data sheets and with the manufacturer's technical department. DELTA® Accessories complete a UV resistant air barrier and WRB system. DELTA®-FASSADE SA is suitable for:

- Buildings under IRC
- Type V-B construction under IBC
- Buildings under 40' with no plastic foam insulation under IBC



DELTA® products support sustainable and energy-efficient building practices, including efforts toward achieving LEED® certification (LEED® for New Construction & Major Renovations, LEED® for Core and Shell, LEED® for Existing Buildings and LEED® for Homes).

### Technical Data

Product name	DELTA®-FASSADE SA	
Color	black	
Material	high strength spun-bonded polypropylene (PP) fabric with UV stable acrylic coating	
Adhesive coating	Full surface coating with vapor permeable pressure-sensitive adhesive	
Vapor permeance	30 perms [grains/h/ft <sup>2</sup> /in Hg]	ASTM E96-05, Proc. A
	50 perms [grains/h/ft <sup>2</sup> /in Hg]	ASTM E96-05, Proc. B
Water vapor transmission	214 g/m <sup>2</sup> /24 h	ASTM E96-05, Proc. A
	343 g/m <sup>2</sup> /24 h	ASTM E96-05, Proc. B
Tensile strength	MD 101 lbf	ASTM D5034
	XD 94 lbf	
Elongation at break	MD 40 %	ASTM D5034
	XD 58 %	
90° Peel adhesion	Pass	AAMA 711-5.3 (ASTM D3330)
Accelerated aging (UV)	Pass	AAMA 711-5.4
Elevated temperature	Pass (Level 3)	AAMA 711-5.5
Thermal cycling	Pass	AAMA 711-5.6
Adhesion after water immersion	Pass	AAMA 711-5.8
Air permeance	< 0.02 l/(s x m <sup>2</sup> ) @ 75 Pa	ASTM E2178
Water resistance hydrostatic pressure	Pass 60 minute Grade D building paper equivalent	ASTM D779-03
Flame spread	10	ASTM E84-18
	NFPA Class A; IBC Class A	
Smoke developed	95	ASTM E84-18
	NFPA Class A; IBC Class A	
Service temperature	-40 °F to +176 °F (-40 °C to +80 °C)	
Application temperature	Minimum 40 °F (5 °C)	
Roll weight	approx. 44 lb (20 kg)	
Roll length	115 ft (35 m)	
Roll width	4' 11" ft (1.5 m)	
Maximum UV (sunlight) exposure	Always cover as soon as possible. Maximum exposure 30 weeks (prior to installation of cladding)	
Service life expectancy	> 25 years, if installed behind cladding systems that have open joints of up to 2" (50 mm) width which expose no more than 40% of entire façade surface	
DELTA® Accessories	DELTA®-FASSADE TAPE 2 1/2" x 65' 7" (10 / box) DELTA®-FASSADE FLASHING 4" x 65' 7" (6 / box) DELTA®-FASSADE FLASHING 9" x 65' 7" (2 / box) DELTA®-TILAXX - 310 ml cartridge DELTA®-LFS - 300 ml cartridge DELTA®-HF PRIMER 1.3 gal. (5 L) / pail or DELTA®-ADHESIVE LVC 4.72 gal. (17.9 L) / pail DELTA®-ADHESIVE 4.72 gal. (17.9 L) / pail	Working temperature from 40 °F to 104 °F (+5 °C to 40 °C)

For technical support, call our technical support team at 1-888-4DELTA4 (1-888-433-5824) extension 326, or visit [www.dorken.com](http://www.dorken.com).