

Technical Data

Properties	Panel Density				Unit	Standard
	115		180			
Compressive strength (perpendicular ¹⁾ / parallel ²⁾ to plane)	¹⁾ 218	²⁾ 116	¹⁾ 464	²⁾ 305	PSI	EN 826
E-Modulus compression (perpendicular ¹⁾ / parallel ²⁾ to plane)	¹⁾ 9718	²⁾ 6527	¹⁾ 17115	²⁾ 15370	PSI	EN 826
Bending strength (t=15 mm, welding lines lengthwise)	218		449		PSI	EN310
Bending strength (t=15 mm, welding lines crosswise)	174		363		PSI	EN310
Transverse tensile strength (perpendicular to plane)	275		435		PSI	ASTM C297
Vicat softening temperature 1 (on the welding lines)	-		212		°F	EN ISO 306
Vicat softening temperature 2 (between the welding lines)	-		163		°F	EN ISO 306
R-Value per Inch	4,0		3,43		(hr.ft ² °F/ BTU.in)	EN 12667
Therm. Expansion coefficient - Thickness direction - Length / Width (range -68°F to + 140°F)	69,3 74,6		67,8 69,3		10 ⁻⁶ /K	DIN 53752
Vapor resistance factor	20 perms at 3/4 "		0.9 perms at 3/4 "		s _d	ASTM E96
Resistance to axial withdrawal of screws ³⁾ - Screw-in depth 15 mm - Screw-in depth 20 mm - Screw-in depth 30 mm - Screw-in depth 40 mm	43 65 105 141		90 117 187 243		P	EN 320 (referring to)
Building material class / Fire behavior	B2 ⁴⁾		B2 ⁵⁾		-	DIN 4102
Recycling PET Ratio*	95		95		%	-
Absorption of water (after 7 days water storage)	Ca. 2,0		Ca. 2,0		Vol.-%	Internal
Swelling in thickness (after 7 days water storage)	< 0,5		< 0,5		%	Internal

*Note: no halogenated blowing agents are used, nor HBCD. ¹⁾ Tested on 60mm ²⁾ Tested on 10mm



www.partel.ie
sales@partel.ie
P: 0818 33 33 55



www.partel.co.uk
sales@partel.co.uk
P: 02037 401918

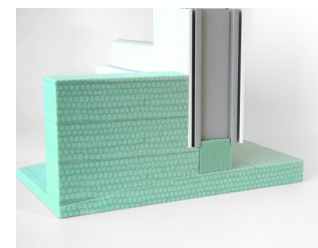
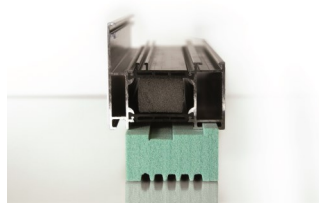
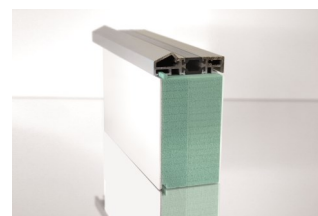


www.partel.com
sales@partel.com
P: 888 487 1012



Advantages

- ✓ Efficient thermal break
- ✓ Excellent mechanical strength
- ✓ High compressive strength
- ✓ Breathable material
- ✓ Permeable to water vapor diffusion
- ✓ Lower thermal conductivity
- ✓ Optimal insulation properties
- ✓ Lightweight and cost-effective composite structure



"The information provided is based on current knowledge and experience. This data sheet may become invalid and we reserve the right to make changes to designs and processes as we continually improve quality. Processing instructions including full system component details should be adhered to. Visit partel.com for the most up to date information"



www.partel.ie
sales@partel.ie
P: 0818 33 33 55



www.partel.co.uk
sales@partel.co.uk
P: 02037 401918



www.partel.com
sales@partel.com
P: 888 487 1012